

Optimizing health care facilities

Health Care Facilities & COVID-19 Safety: What You Need to Know

17 March 2020

© 2020 American Society for Health Care Engineering,
a personal membership group of the American Hospital Association
155 N. Wacker Drive, Suite 400 | Chicago, IL 60606
ashe.org | ashe@aha.org | 312-422-3800

Disclaimer

This information is provided by ASHE as a service to its members. The information provided may not apply to a viewer's specific situation and is not a substitute for application of the viewer's own independent judgment or the advice of a competent professional. ASHE does not make any guarantee or warranty as to the accuracy or completeness of any information provided. ASHE and the authors disclaim liability for personal injury, property damage, or other damages of any kind, whether special, indirect, consequential, or compensatory, that may result directly or indirectly from use of or reliance on information from this webinar.

Patient Placement – CDC Recommendations

For patients with COVID-19 or other respiratory infections, evaluate need for hospitalization. If hospitalization is not medically necessary home care is preferred.

If hospitalization is necessary and ample Airborne Infection Isolation Rooms are available:

- CDC doesn't require placement in AIIRs, but consider using if resources allow
- Limit transport and movement of the patient outside of the room to medically essential purposes
- Patients should be housed in the same room for the duration of their stay
- Whenever possible, perform procedures/tests in the patient's room

CDC Guidance to Healthcare Professionals accessed 13 March 2020 at https://www.cdc.gov/coronavirus/2019-ncov/infection-control/control-recommendations.html?CDC_AA_refVal=https%3A%2F%2Fwww.cdc.gov%2Fcoronavirus%2F2019-ncov%2Fhcp%2Finfection-control.html

Patient Placement – CDC Recommendations

If hospitalization is necessary and Airborne Infection Isolation Rooms are limited, placement in a single-person room with the door closed

- Room should have a dedicated bathroom
- Limit patient transport and patient transfers

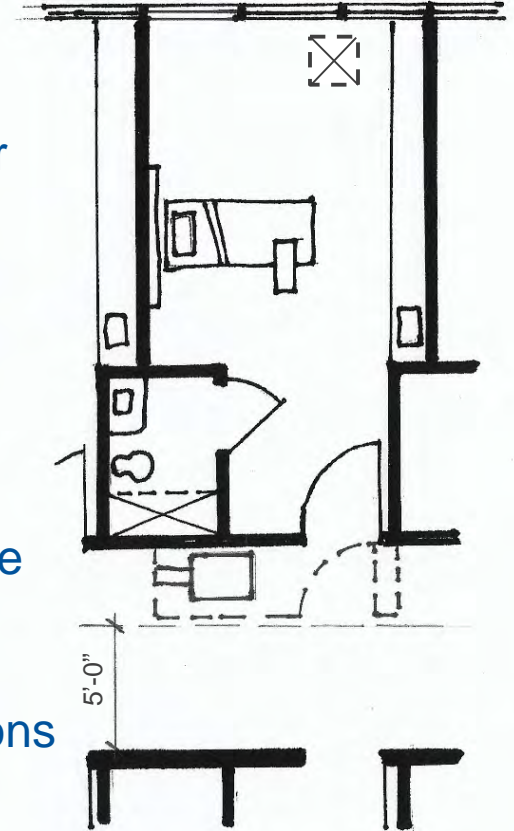
AIIR's should be reserved for patients who will be undergoing aerosol-generating procedures

CDC Guidance to Healthcare Professionals accessed 13 March 2020 at https://www.cdc.gov/coronavirus/2019-ncov/infection-control/control-recommendations.html?CDC_AA_refVal=https%3A%2F%2Fwww.cdc.gov%2Fcoronavirus%2F2019-ncov%2Fhcp%2Finfection-control.html

Small Scale Surge

HEPA to Corridor

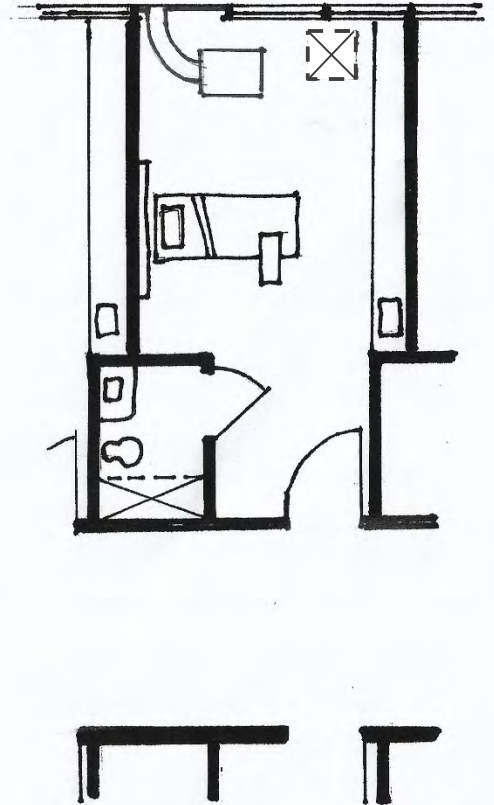
- Single patient room with dedicated bathroom
- Create “sealed” vestibule to patient room
 - Need minimum 5’-0” egress clearance in the corridor
- Seal off return air grill in patient room
- Place HEPA filtered negative air machine in vestibule
- Duct through vestibule to corridor
- Keep door to vestibule closed but door to patient room open
 - Verify that patient room door is not a rated fire door!
- Verify negative pressure prior to placing room in service and monitor negative pressure while in service
- Limit patient transport and patient transfers
- Terminal cleaning after ACH remove potentially infectious particles



Small Scale Surge

HEPA to Outside

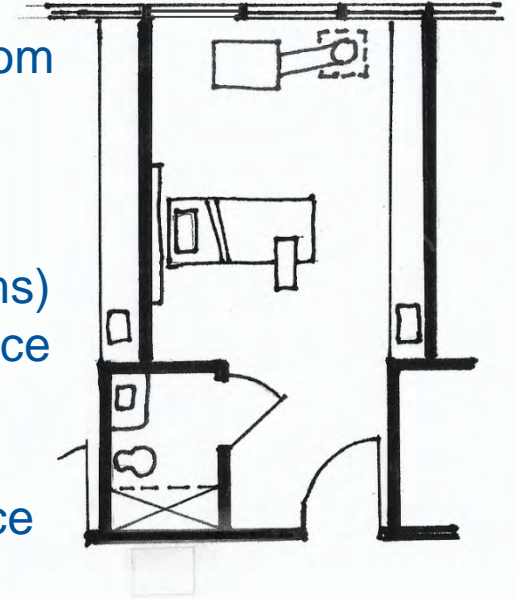
- Single patient room with dedicated bathroom
- Seal off return air grill in patient room
- Place HEPA filtered negative air machine in patient room
- Duct through exterior to outside
 - Remove window and enclose opening
- Keep door to patient room closed
- Verify negative pressure prior to placing room in service and monitor negative pressure while in service
- Limit patient transport and patient transfers
- Terminal cleaning after ACH remove potentially infectious particles



Small Scale Surge

HEPA to Return

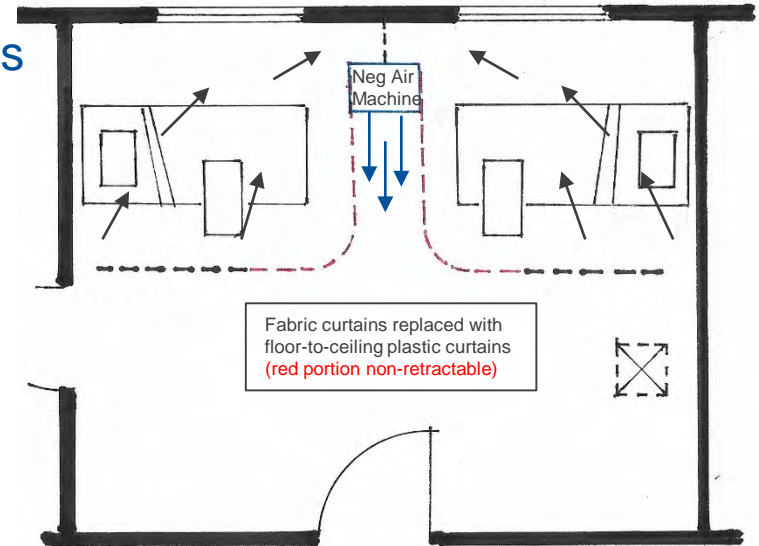
- Single patient room with dedicated bathroom
- Place HEPA filtered negative air machine in patient room
- Duct to return air grill
- Seal off remaining part of return air grill
- Verify impact that this will have to the overall air handling system (neg pressure in other patient rooms)
- Choosing rooms closest to the air handler may reduce impact
- Keep door to patient room closed
- Verify negative pressure prior to placing room in service and monitor negative pressure while in service
- Limit patient transport and patient transfers
- Terminal cleaning after ACH remove potentially infections particles



Small Scale Surge

Multi-bed Zone-Within-Zone Room

- Patient room with dedicated bathroom
- Separate beds with ballasted plastic curtains
- Negative Air machine set equidistant between patient beds
- Seal off return air grill in patient room
- Keep door to patient room closed
- Verify negative pressure prior to placing room in service and monitor negative pressure while in service
- Limit patient transport and patient transfers
- Terminal cleaning after ACH remove potentially infectious particles



CDC/NIOSH, Expedient methods for surge airborne isolation within healthcare settings during response to a natural or manmade epidemic, accessed 16 March 2020 at: <https://stacks.cdc.gov/view/cdc/37781>